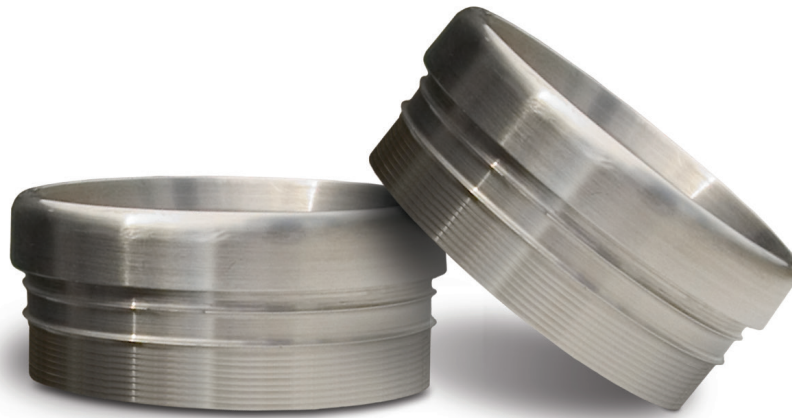


Dynatech[®]

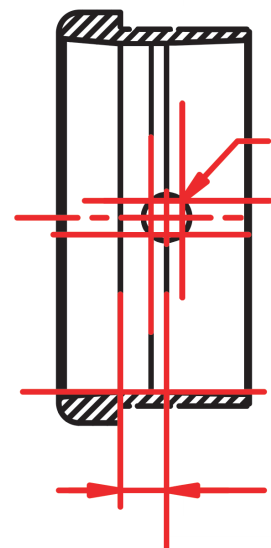
Competition Exhaust Systems

TA TIP[®]



Installation Tips:

1. After removing from package, test fit the tip into the exhaust pipe.
2. File down the ridges and test fit until the tip will slide into the pipe and has a snug fit.
3. At a desired location, drill a 9/32" hole through the exhaust pipe and the tip for the supplied bolt to be inserted.
4. Tighten the bolt and nut.



0.281

Drill hole 1/4 to 5/16 inches from the end of the tailpipe.

www.DynatechHeaders.com | Copyright 2018 - AFCO Performance Group

These products are intended for racing and off-road applications. Not legal for sale or use in the state of California, nor in states which have adopted California emission standards.