

INSERT CONES

VORTEX® INSERT CONE

- 100% T-304 stainless steel construction.
- Ultra-lightweight, less than .500 lbs. each.
- Little or no power loss.
- Easy bolt-in installation.

HOW IT WORKS:

The Vortex® Insert Cone, installed near the exit of the header collector or muffler outlet, provides a large friction area to reflect and dissipate sound energy, thus reducing the dB level. The open area of the cone is actually greater than the area of the collector or exhaust pipe, thus reducing a back pressure condition. Because no significant back pressure has been introduced, the engine is still able to use the scavenge ability of a good header to create horsepower and torque. Dyno and track testing show significant noise reduction with little or no power loss.

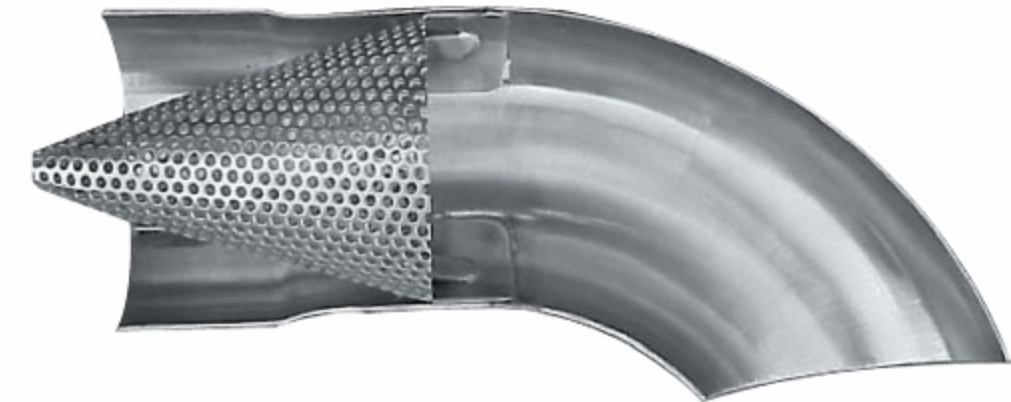


TUBE SIZE	A	B	PART #	PRICE
3.000"	3.750"	1.000"	772-32520	\$89.99
3.500"	4.750"	1.000"	772-32510	\$89.99
4.000"	6.250"	1.000"	772-32530	\$89.99
4.500"	6.750"	1.000"	772-32540	\$99.99

Weighs less than 1/2 lbs. 1-3 dB reduction.

TURN DOWNS WITH CONES

The Vortex® Turn Down is expanded to slip over collector outlets or tail pipes. Greater sound reduction can be achieved by directing the outlet away from the meter or sound test point. U-tab mounting hardware is included.



DESCRIPTION	TUBE SIZE	PART #	PRICE
TURN DOWN WITH 3.000" CONE INSTALLED	3.000"	780-01100	\$109.99
TURN DOWN WITH 3.500" CONE INSTALLED	3.500"	780-01200	\$109.99

CONES ARE SOLD INDIVIDUALLY, TWO REQUIRED PER V-8 ENGINE.